

		SCANIA R620 	2005-2008 PROTOCOLLO RESISTIVO 2005-2008 RESISTIVE PROTOCOL
---	---	--	--



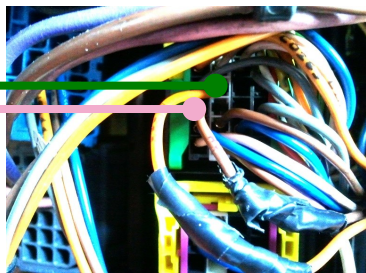
POSIZIONE CONNETTORE: VANO FUSIBILIERA - CONNECTOR LOCATION: FUSE BOX

NELLA FUSIBILIERA LATO PASSEGGERO SITROVA IL CONNETTORE RADIO OEM, NEL QUALE SONO LOCATI I 2 FILI DEI COMANDI A VOLANTE. CONNESSIONI:
FILO GIALLO (AUX50) GND
FILO MARRONE (AUX51) SEGNALE

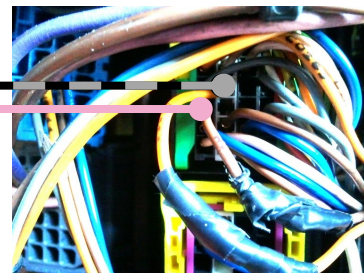
INTO THE FUSE BOX PASSENGER SIDE, THERE IS THE OEM CONNECTOR IN WHICH THERE ARE 2 STEERING WHEEL COMMANDS WIRES.

CONNECTIONS:
YELLOW WIRE (AUX50) GND
BROWN WIRE (AUX51) SIGNAL

CONNESSIONI DI
UNICOM
UNICOM
CONNECTIONS



CONNESSIONI DI
UNICO DUAL
UNICO DUAL
CONNECTIONS

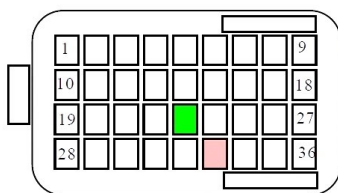


CONNESSIONI DI
LOGICAN
LOGICAN
CONNECTIONS



COMANDI A VOLANTE - STEERING WHEEL CONTROLS

FARE LA MEMORIZZAZIONE CON IL VEICOLO IN MOTO.
PLEASE MAKE THE MEMORIZING WITH THE VEHICLE ON.



FUNZIONI - FUNCTIONS

1	VOL+
2	VOL —
3	SEEK +
4	SEEK —
5	SOURCE
6	Tasto telefono / Phone button

PRODOTTI SUGGERITI - SUGGESTED PRODUCTS

LOGICAN UNICOM UNICO DUAL UNIKA