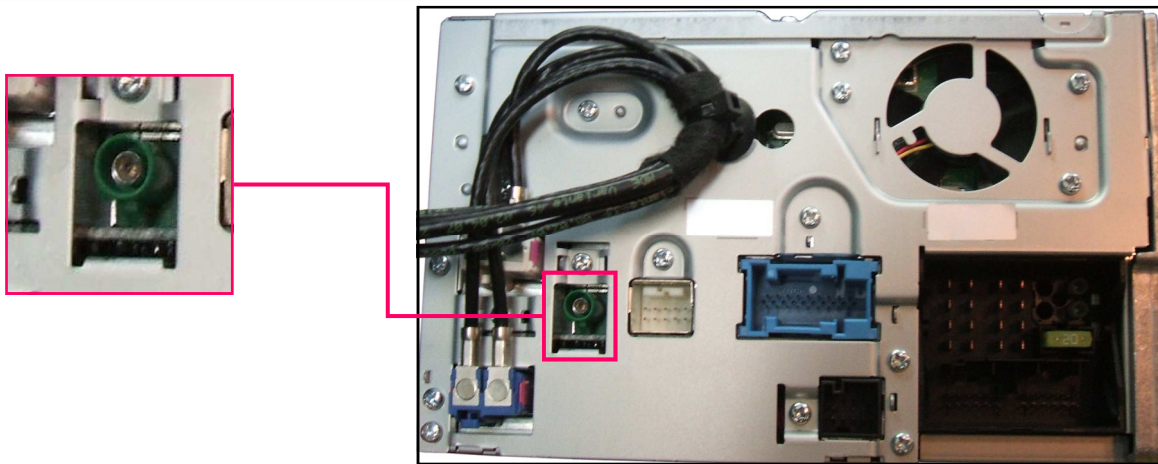


MULTIMEDIA MERCEDES

This module allows you to connect AUDIO/VIDEO sources with PAL/NTSC video format to the OEM RADIO/NAVIGATION SYSTEMS of MERCEDES vehicles having the COMAND APS system.

With this device it's possible to connect TV-Tuner, DVD Player, Game Station and similar, and visualize the images directly in the OEM Monitor .

Multimedia Mercedes is compatible with all the COMAND APS systems having the back camera input AUX VIDEO (GREEN PLUG)).



ATTENTION BE SURE THAT THE AUX VIDEO PLUG (GREEN PLUG) IS ACTIVATED. VERIFY THIS BY USING THE MERCEDES COMPUTER DIAGNOSTIC. IF NOT, ACTIVE IT!



ATTENTION TO LISTEN THE AUDIO IT MUST TO ACTIVATE THE AUX PROFILE ON THE MENU OF THE OEM RADIO NAVIGATION SYSTEMS !

The module is simple to connect thanks to the plug and play wiring.

The radio / navigation COMAND APS is available in different versions depending on the year of manufacture and / or vehicle model.

Therefore the wiring plug and play is provided in the most popular configuration, but you can change configuration following the diagrams. Configure the bullets as described in each diagram.

DIAGRAM A (DEFAULT)

A CLASS >2007
B CLASS >2007
ML CLASS >2007
R CLASS >2007
GL >2007

CONNECT TO THE VEHICLE

CONNECT TO THE RADIO

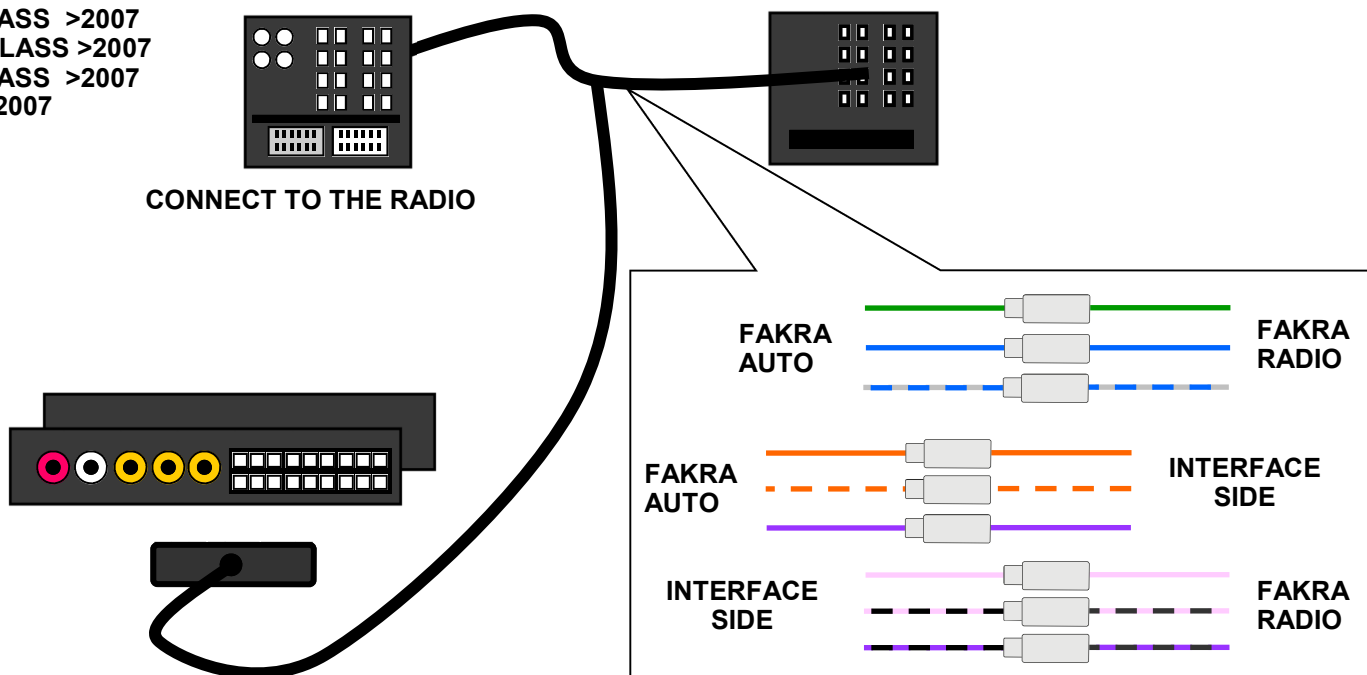
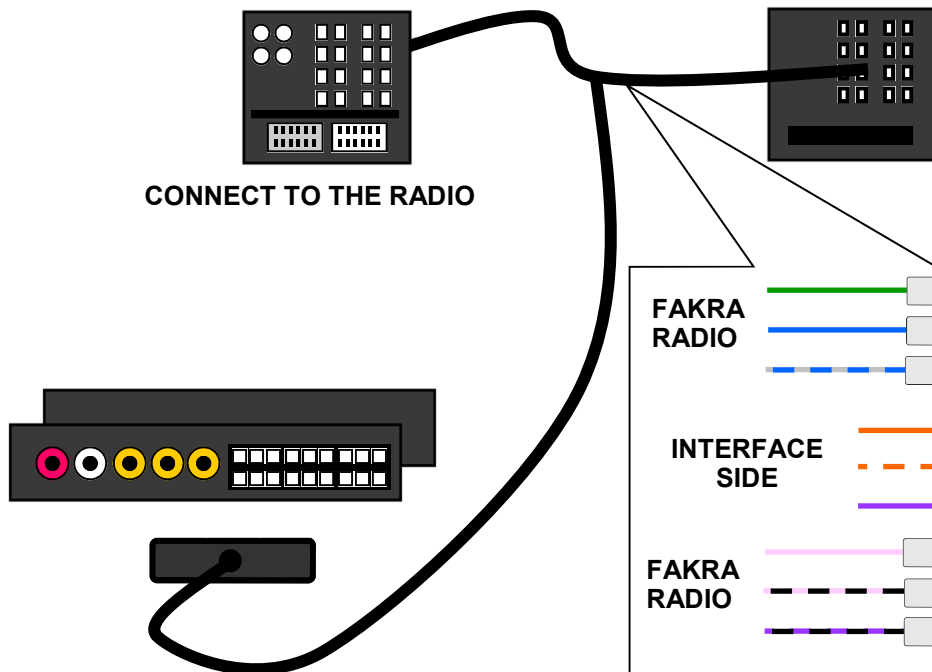


DIAGRAM B
ML CLAS >2009

CONNECT TO THE VEHICLE

CONNECT TO THE RADIO



FAKRA
RADIO

INTERFACE
SIDE

INTERFACE
SIDE

FAKRA
AUTO

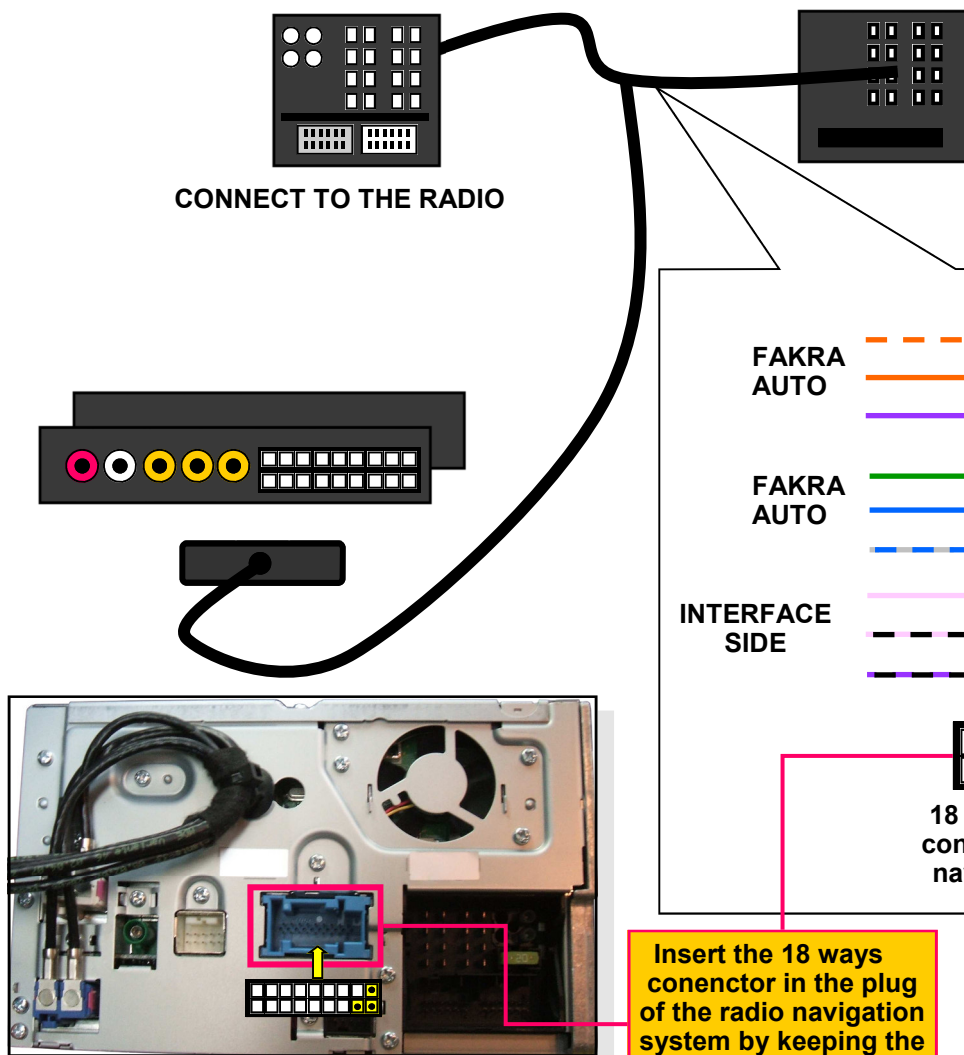
FAKRA
RADIO

FAKRA
AUTO

DIAGRAM C
C CLASS >2008

CONNECT TO THE VEHICLE

CONNECT TO THE RADIO



FAKRA
AUTO

FAKRA
RADIO

FAKRA
AUTO

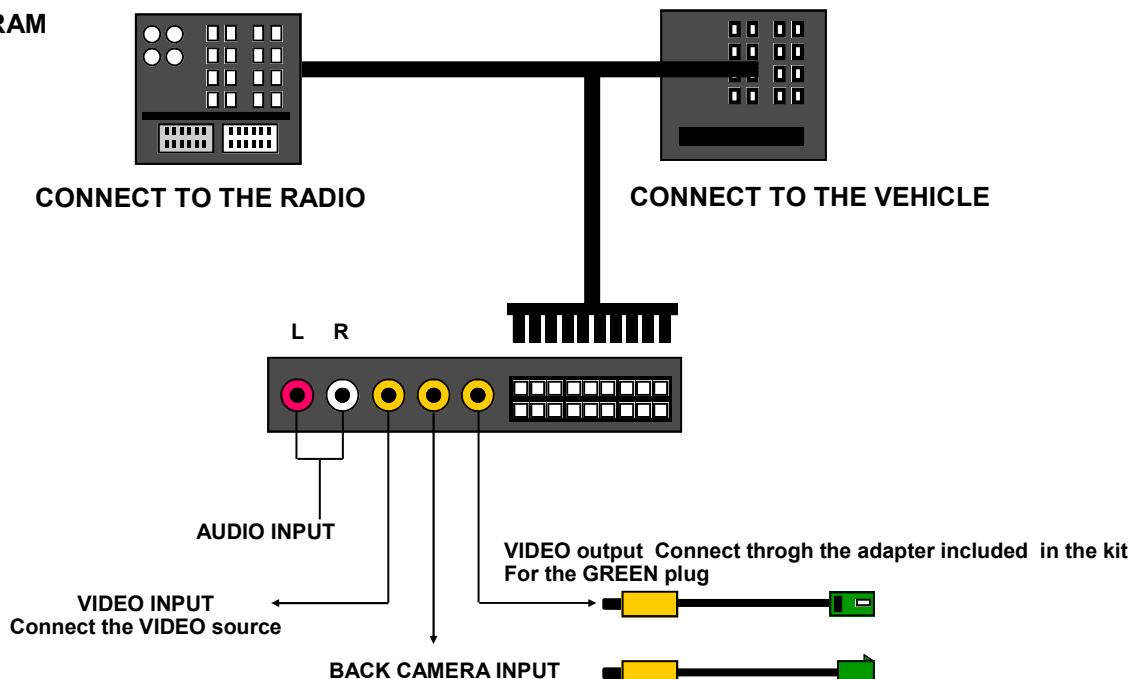
FAKRA
RADIO

INTERFACE
SIDE

18 ways adapter to
connect to the radio
navigation system

Insert the 18 ways
conenctor in the plug
of the radio navigation
system by keeping the
polarity as shown.

STANDARD DIAGRAM



TV IN MOTION FUNCTION

To activate the view it is necessary to make the following procedure: VOLUME + / VOLUME — / VOLUME + / VOLUME —
Repeat the same procedure to blind the screen.



WARNING

ACTIVA-

TE THE VIEW

ONLY WHEN THE VEHICLE IS STOPPED! WE DECLINE ANY RESPONSIBILITY IN CASE OF ACTIVATION OF THE FUNCTION WHILE DRIVING

ACTIVATIONS

For proper working of the device it is needed that the BACK CAMERA profile is active.

This activation is performed with the Mercedes diagnostic computer connected to the OBD connector of the vehicle.

STEPS TO SELECT: (DIAGRAM A)

- Command unit
- Option audio / video telematic navigation
- COMAND APS AUDIO 50
- Unit Adaptation
- Read coding and correct
- Radio parameters
- Back camera ACTIVE.

For the new ML the activation should be done on line (diagram B):

- Activate the back camera unit 218
- Disable media interface unit 518 (if active)
- Activating VIDEO AUX input

ATTENTION

VERSIONS OF THE VEHICLE, WITH SEPARATED RADIO NAVIGATOR SCREEN (DIAGRAM C) TO BE COMPATIBLE SHOULD HAVE ABSOLUTELY THE MERCEDES MEDIA INTERFACE MODULE AND HAVE IN-PUT ON IPOD ACTIVE



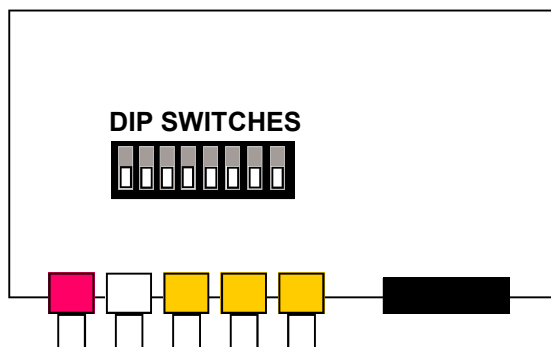
ATTENTION ON THE OEM NAVIGATION SYSTEM SCREEN APPEARS THE SENTENCE “ATTENTION TO THE NEAR AREA” THIS SENTENCE IT IS NOT POSSIBLE TO DELETE DUE TO THE FACT THAT IT IS A SAFETY INFORMATION FOR THE SECURITY OF THE DRIVER.

COMPATIBILITIES AND CONFIGURATIONS

Vehicles model	Year	Radio Model	Dip setting	Note
A	>2007	Comand APS*	1 On	System without Media Interface Back camera activation needed
B	>2007	Comand APS*	1 On	System without Media Interface Back camera activation needed
ML	>2007	Comand APS*	1 On	System without Media Interface Back camera activation needed
ML	>2009	Comand APS09*	1 On	System without Media Interface Back camera activation needed
R	>2007	Comand APS*	1 On	System without Media Interface Back camera activation needed
GL	>2007	Comand APS*	1 On	System without Media Interface Back camera activation needed
C	>2008	Comand APS*	2 On	Media Interface device needed IPOD activation needed
E COUPE	>2009	Comand APS09*	3 On	System without Media Interface Back camera activation needed

ON DEFAULT IS SET THE CONFIGURATION DIP SWITCH 1 ON

**ATTENTION IF THE BACK CAMERA IS AVAILABLE
PLEASE SET DIP SWITCH 8 ON**



**THIS PRODUCT IS COVERED BY TWO-YEAR GUARANTEE
FOR ANY MANUFACTURING TROUBLES. THE WARRANTY IS VALID IF ACCOMPANIED
BY THE INVOICE OF PURCHASE**