		UNICOM PLUS RENAULT				TABELLE RADIO RADIO TABLES			08.02.23 REV 1.0 23		
FUNC.	CLARION	KENWOOD	JVC	PIONEER		SONY PHONOCAR VM040-VM041		ALPINE	NON USATO NOT USED	PANASONIC	
	FILO E IR	FILO E IR	FILO E IR	FILO	IR	FILO	IR	FILO		FILO IR	
FLASH	1	2	3	4		5		6	7	8	
1	VOLUME —										
2	VOLUME +										
3	SEEK —										
4	SEEK +										
5	FUNC	SOURCE PHONE CLOSE	SOURCE	MODE	MODE	SOURCE	SOURCE	SOURCE		MODE	
6	MUTE	MUTE	MUTE	MUTE	MUTE	MUTE	MUTE	MUTE		MUTE	
7	BAND	UP	UP	UP	UP	X	OFF	UP		PWR	
8	DISP	DOWN	DOWN	DOWN	DOWN	X	UP	DOWN		PROG	
9	TA	PHONE ANSWER	PHONE ANSWER	PHONE ANSWER	BAND	X	DOWN	PHONE ANSWER		X	
10	INPUT SEL	PHONE CLOSE	PHONE CLOSE	PHONE CLOSE	FUNC	PHONE CLOSE / OFF	MODE	PHONE CLOSE		X	
11	X	X	VOICE	VOICE	X	VOICE	X	X			

FUNC.	NON USATO NOT USED	BLAUPUNKT	NON USATO NOT USED	ECLIPSE AVN2227P AVN4429 AVN726EE	NON USATO NOT USED	ECLIPSE AVN8826 CD8445E CD4525E AVN726EE	MACROM o per radio ad apprendimento resistivo VEDERE A PAGINA 3 FUNZIONE SPECIALE or for resistive learning radios SEE AT PAGE 3 SPECIAL FUNCTION	NON USATO NOT USED	PHONOCAR 1 FOR YOU CMU128 CM123 VM020 VM021 VM024 FILO E IR	PHONOCAR 2 DM736 VM016 FILO E IR MACROM M-DVD4650R	PHONOCAR 3 ⁽¹⁾ VM029-VM030 VM031-VM032 VM036
		FILO IR		FILO		IR	FILO IR		IR	IR	IR
FLASH	9 / 10 11 / 12	13	14 / 15 / 16 17 / 18 / 19	20	21 / 22	23	24	25	26	27	28
1	VOLUME —										
2	VOLUME +										
3	SEEK —										
4	SEEK +										
5		SOURCE		MODE		SOURCE	MODE		MODE	MODE	MODE
6		MUTE		X		MUTE	MUTE		MUTE	MUTE	MUTE
7		UP		X		UP	UP		PLAY/PAUSE	PLAY/PAUSE	PLAY/PAUSE
8		DOWN		X		DOWN	DOWN		BAND	BAND	BAND
9		OK		X		X	PHONE ANSWER		INT	REPEAT	PHONE ANSWER
10		X		X		X	PHONE CLOSE		REPEAT	POWER	PHONE CLOSE
11		X		X		X	VOICE		X	X	X

FUNC.	NON USATO NOT USED		ZENEC1 ZE-MC192 ZE-NC2040 XZENT XT8020	ZENEC2 (ZE-MC192/SMART DIAL REMOTE CON- TROL)	HARDSTONE 1 HS DPM62 HS DPM63	HARDSTONE 2 HS DPM30	HARDSTONE 3 HS DPM31 HS DPM61 FILO E IR PHONOCAR VM017 VM018 FILO E IR VM035 IR	HARDSTONE 4 HS DPM36 HS DPM70	HARDSTONE 5 HS CD1970		
			FILO IR	FILO IR	FILO IR	IR	FILO IR	IR	IR		
FLASH	29 / 30 / 31 / 32 / 33 / 36 / 37		38	39	40	41	42	43	44		
1	VOLUME —										
2	VOLUME +										
3	SEEK —										
4	SEEK +										
5			SOURCE	OK (CONF.SEL)	MODE	SRC	SRC	SRC	MODE		
6			MUTE	MEMOR. RADIO	MUTE	MUTE	MUTE	MUTE	MUTE		
7			BAND/STOP	X	BAND	BAND	BAND	BAND	BAND		
8			DOWN	X	<<	RDM	UP	AST	RPT		
9			UP	X	>>	RPT	PHONE ANSWER	RPT	SEL		
10			OK	X	POWER	SEL	PHONE CLOSE	RDM	NEXT 10 TRACK		

FUNC.	NON USATO NOT USED	TV DIGITALE KENWOOD	ALPINE 2 RUE-4912 DVD	ALPINE 3 RUE-4912 NAVI	NON USATO NOT USED	ECLIPSE 3 RMC101	HARDSTONE 6 HS-DPM7G	NON USATO NOT USED	HARDSTONE7 HS DPM8G PHONOCAR N6205	MACROM 2 M-DVD5551R M-DVD6545R	NON USATO NOT USED
		FILO IR	IR	IR		IR	FILO IR		FILO IR	FILO IR	
FLASH	45	46	47	48	49	50	51	52 / 53	54	55	56 / 57 / 58 / 59 / 60 / 61 / 62
1	VOLUME —										
2	VOLUME +										
3	SEEK —										
4	SEEK +										
5		X	SRC	SRC		SRC	MODE		MODE	MODE	
6		X	MUTE	UP		UP	MUTE/ PHONE CLOSE		MUTE	MUTE	
7		X	UP	DOWN		DOWN	BAND/ PHONE ANSWER		BAND	RDM	
8		X	DOWN	X		POWER	RPT		RPT	RPT	
9		X	X	X		X	SEL		PLAY/PAUSE	PLAY/PAUSE	
10		X	X	X		X	PWR		POWER	STOP/BAND	

FUNC.	MACROM 3 M-DVD6555R M-DVD6556R FILO E IR PHONOCAR VM041	MACROM 4 M-DVD5542R M-DVD5561R M-DVD5562R FILO E IR M-DVD5541R	NON USATO NOT USED	ZENEC 3 ZE-NC520 ZE-NC524	NON USATO NOT USED	PHONOCAR 4 VM050		BLAUPUNKT2 ATLANTA110 MADRID310 TORONTO410BT SAN FRANCISCO310	JVC2 KW-AVX840
	IR	FILO IR		FILO E IR		FILO E IR		FILO IR	IR
FLASH	63	64	65 / 66 / 67	68	69	70	71 / 72 / 73	74	75
1	VOLUME —								
2	VOLUME +								
3	SEEK —								
4	SEEK +								
5	SRC	SRC		SRC		SRC		SOURCE	SOURCE
6	MUTE	MUTE		MUTE		MUTE		MUTE	MUTE
7	UP	PLAY/PAUSE		BAND/STOP		PLAY		UP	UP
8	DOWN	BAND		DOWN		BAND		DOWN	DOWN
9	PHONE ANSWER	PHONE ANSWER		PHONE ANSWER		PHONE ANSWER		PHONE ANSWER	PHONE ANSWER
10	PHONE CLOSE	PHONE CLOSE		PHONE CLOSE		PHONE CLOSE		PHONE CLOSE	PHONE CLOSE

FUNC.	BLAUPUNKT NEW YORK 800	TV DAS	PHONOCAR 5 VM066	NON USATO NOT USED	PHONOCAR 6 VM037	HARDSTONE8 HS-DPM71 HS-DPM69 HS-DPM64	PHONOCAR 7 VM033	MACROM 5 M-DVD7702 M-DVD7701 M-DVD7602 M-DVD7601	ALPINE4
	FILO	IR	FILO IR		FILO IR	FILO IR	FILO IR	IR	FILO IR
FLASH	76	77	78	79 / 80 / 81 / 82	83	84	85	86	87
1	VOLUME —								
2	VOLUME +								
3	SEEK —								
4	SEEK +								
5	SOURCE or PHONE ANSWER	X	SRC		MODE	SOURCE/PWR	MODE	MODE	SOURCE
6	MUTE or PHONE CLOSE	X	MUTE		MUTE	MUTE	MUTE	MUTE	MUTE
7	X	X	PLAY		BAND	<<	BAND	Play-Pause / ENTER	UP
8	X	X	POWER		UP	>>	UP	RIGHT	DOWN
9	PHONE ANSWER or SOURCE	X	PHONE ANSWER		DOWN	PHONE ANSWER/ BACK	DOWN	AMS/PHONE ANSWER	PHONE ANSWER
10	PHONE CLOSE or MUTE	X	PHONE CLOSE		PLAY/PAUSE	PHONE CLOSE/ ROOT	ENTER/PLAY/ PAUSE	BAND/PHONE CLOSE	PHONE CLOSE

FUNC.	CLARION 2 NX-501E NX-502E NX-503E NX-404E NX-504E	BLACHSTONE BS-ARM11	RADIO JEEP PHONOCAR	RADIO AUDI A4 PHONOCAR	NC	ECLIPSE 4 AVN827GA	PHONOCAR 8 VM081	PHONOCAR 9 RADIO CAPTUR	PHONOCAR 10 VM025 VM026
	FILO IR	FILO IR	FILO IR	FILO IR		FILO	FILO IR	FILO IR	FILO
FLASH	88	89	90	91	92	93	94	95	96
1	VOLUME —								
2	VOLUME +								
3	SEEK —								
4	SEEK +								
5	SOURCE/PWR	SOURCE/PWR	SOURCE	SOURCE	X	SOURCE	SOURCE	SOURCE	SOURCE
6	MUTE	MUTE	MUTE	MUTE	X	MUTE	MUTE	MUTE	MUTE
7	RDM	PHONE ANSWER/BACK	X	X	X	PHONE ANSWER	X	PLAY/PAUSE	X
8	TA	PHONE CLOSE/ROOT	X	X	X	VOICE	X	RPT	X
9	PHONE ANSWER	PHONE ANSWER/ BACK	PHONE ANSWER	X	X	PHONE ANSWER / PHONE CLOSE	PHONE ANSWER	PHONE ANSWER	X
10	PHONE CLOSE /BAND	PHONE CLOSE/ROOT	PHONE CLOSE	X	X	PHONE CLOSE	PHONE CLOSE	PHONE CLOSE	X

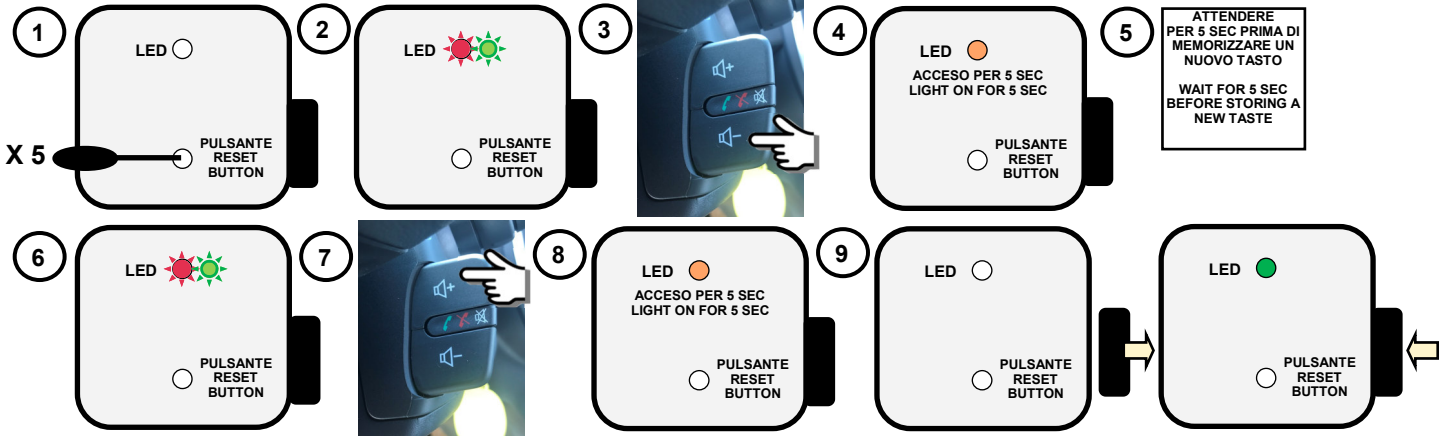
FUNC.	KENWOOD NRM
	FILO IR
FLASH	97
1	VOLUME —
2	VOLUME +
3	SEEK —
4	SEEK +
5	SOURCE PHONE CLOSE
6	MUTE
7	UP
8	VOICE
9	PHONE ANSWER
10	PHONE CLOSE

FUNZIONE SPECIALE

Eseguire la programmazione dei pulsanti dei comandi a volante sul modulo, come da normale procedura descritta sul manuale.
Per i modelli di radio MACROM o altre radio ad apprendimento resistivo selezionare il profilo radio 24.
Ora solo per la fase di memorizzazione dei pulsanti dell'auto sul menu SWC della radio Macrom (o per radio ad apprendimento resistivo), occorre impostare l'uscita del modulo (filo VIOLA) prolungata a 5 secondi.
Questa impostazione si attiva premendo **velocemente** 5 volte il tasto di reset del modulo (1), il led inizierà a lampeggiare **ROSSO - VERDE** (2).
Ora ad ogni pressione medio-breve di un pulsante sul volante (3), il led resterà acceso **ARANCIONE** fisso per 5 secondi (4), in modo che la radio riesca a memorizzare il valore del relativo pulsante.
Durante i 5 secondi di led ARANCIONE (5), **NON PREMERE ALTRI PULSANTI fino a che il led non ricominci a lampeggiare ROSSO - VERDE** (6).
Seguire questa procedura per ogni tasto.
Alla fine della programmazione sulla radio, per uscire dalla funzione speciale, scollegare e ricollegare il modulo (9).

SPECIAL FUNCTION

Program the steering wheel control buttons on the module, as per the normal procedure described in the manual.
For MACROM radio models or other resistive learning radios select radio **profile 24**.
Now only for the memorization phase of the car buttons on the SWC menu of the Macrom radio (or for resistive learning radios), the module output (VIOLET wire) must be prolonged at 5 seconds.
This function is activated by pressing the module reset button 5 times **quickly** (1), the LED will start flashing **RED - GREEN** (2).
Now, to each medium-short press of a button on the steering wheel (3), the LED will light on steady **ORANGE** for 5 seconds (4), so that the radio is able to memorize the value of the relative button.
During the 5 seconds of the ORANGE LED (5), **DO NOT PRESS ANY OTHER BUTTONS until the LED starts flashing RED - GREEN again** (6).
Follow this procedure for all the buttons (8)
At the end of programming on the radio, to exit the special function, disconnect and reconnect the module (9).



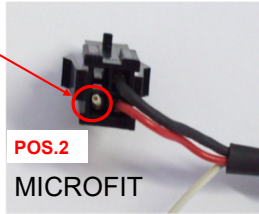
UNICOM PLUS TABELLA FUNZIONI / FUNCTION TAB
COLLEGAMENTI ECLIPSE FILARE (numero lampeggi 20):
AVN2227P: marrone tacche grigie (radio) va con il Viola (interfaccia)/ marrone tacche grigie - Nero (radio) va con il Marrone (interfaccia).
AVN4429 e AVN726EE: marrone tacche grigie (radio) va con il Marrone (interfaccia)/ marrone tacche grigie - Nero (radio) va con il Viola
COLLEGAMENTI ECLIPSE4 FILARE (numero lampeggi 93):
AVN827GA: marrone tacche rosse (radio) va con il Marrone (interfaccia)/ bianco striscia blu tacche grigie (radio) va con il Viola (interfaccia)
ECLIPSE WIRE CONNECTION (number flashes 20):
AVN2227P: brown - grey (radio) with violet (interface)/ brown—grey - black (radio) with brown (interface).
AVN4429 e AVN726EE: brown - grey (radio) with brown (interface)/ brown - grey - black (radio) with violet (interface).
ECLIPSE4 WIRE CONNECTION (number flashes 93):
AVN827GA: brown - red (radio) with brown (interface)/ white - blue - grey (radio) with violet (interface).

ATTENZIONE

⁽¹⁾LA RADIO PHONOCAR VM029 HA SOLO LE SEGUENTI FUNZIONI: VOLUME-, VOLUME+, SEEK-, SEEK+, MODE E MUTE.
PER IL PROFILO RADIO 93 (ECLIPSE AVN827GA) LE FUNZIONI 7 E 10 SERVONO PER L'APPRENDIMENTO DEI TASTI TELEFONO

CAUTION

⁽¹⁾PHONOCAR RADIO VM029 HAS ONLY THE FOLLOWING FUNCTIONS: VOLUME-, VOLUME+, SEEK-, SEEK+, MODE AND MUTE.
PROFILE FOR RADIO 93 (ECLIPSE AVN827GA) FUNCTIONS 7 AND 10 ARE LEARNING KEY TELEPHONE

MODELLO RADIO / RADIO MODEL	ADATTATORE RADIO/ RADIO ADAPTER
CLARION, JVC, MACROM M-DVD5542R, M-DVD5561R, M-DVD5562R; PHONOCAR VM033, VM037, VM029, VM057.	CBL007UNJV12
PIONEER; SONY; PHONOCAR VM040 (flashes 5), VM041 (flashes 5), **VM024; BLAUPUNKT NEW YORK 800 (RESISTIVE); PHONOCAR VM025, VM026.	CBL007UNPI12
ALPINE.	CBL007UNAL22
KENWOOD.	CBL007UNKE11
PANASONIC; PHONOCAR FORYOU, CMU128, CM123, VM020, VM021, DM736, VM016, VM017, VM030, VM031, VM032, VM036, VM050, N6205, VM066; VM081; VM027 ; HARDSTONE HS DPM61, HS DPM62, HS DPM63, HS DPM31, HS DPM7G, HS DPM8G, HS DPM71, HS DPM64, HS DPM69; MACROM M-DVD6555R, M-DVD6556R; RADIO JEEP; RADIO AUDI A4; RADIO CAPTUR.	CBL007UNPN21
BLAUPUNKT; BLAUPUNKT 2 ATLANTA 110, MADRID 210, TORONTO410BT, SAN FRANCISCO 310.	CBL007UNBL12
*VDO.	CBL007UNVD11
ECLIPSE AVN2227P, AVN4429, AVN726EE.	CBL007UNEL11
BLACHSTONEBS-ARM11 Radio ad apprendimento resistivo, si deve impostare sulla radio 10kΩ, il cambio sorgente è sul filo blu della radio (MODE-KEY) da collegare con il nostro marrone, il filo rosa della radio (AD-KEY) va collegato con il nostro viola ed il filo nero della radio con il nostro nero. / Radio resistive to learning, to be set on 10k radio, the transmission source is on the blue wire to the radio (MODE-KEY) to be connected with our brown, the pink wire to the radio (AD-KEY) should be connected with our purple and the black wire to the radio with our black.	
*DISPONIBILE SOLO CON HARDWARE DEDICATO / AVAILABLE ONLY WITH DEDICATED HARDWARE	
**TAGLIARE FILO IN POSIZIONE 2 DEL MICROFIT / TO CUT WIRE IN POSITION 2 OF MICROFIT.	
	

Le informazioni riportate in questo manuale e nei suoi allegati sono puramente a scopo informativo pertanto possono subire modifiche senza preavviso. Al momento della pubblicazione le informazioni risultano corrette ed attendibili. Tuttavia Paser non può essere ritenuta responsabile per eventuali conseguenze derivanti da errori, omissioni o incongruenze del presente manuale e dei suoi allegati (ad. es. per l'eventuale mancato recupero di configurazioni audio originali dei veicoli). Paser si riserva il diritto di migliorare/modificare il prodotto o il manuale senza l'obbligo di notifica agli utenti.

Information in this guide and its attachments are for information purposes only, therefore, they are subject to change without notice. At the time of publication the information is correct and reliable. However Paser can not be held responsible for any consequences resulting from errors, omissions or incongruence of this manual (for ex. missed audio configuration back-up of the vehicles). Paser reserves the right to improve / change the product or manual without obligation to notify users.